



PUTTERILLS

est. 1992



£1,850 Per Month
Fishers Green

Stevenage, SG1 2JA

PROPERTY SUMMARY

A spacious four-bedroom character cottage enjoying a pleasant location set back from the road behind a deep frontage providing off-road parking for several vehicles whilst enjoying pleasant views to Fishers Green opposite.

The property is well presented throughout; the accommodation comprises an entrance porch, entrance hallway, lounge, family dining area with feature fireplace and study/snug recess, kitchen area with doors to the rear aspect overlooking the patio, a modern fitted kitchen, inner hallway leading to a downstairs cloakroom and a large utility room. There is also an integral garage accessed from the main entrance hall. The first-floor landing provides access to four good-sized bedrooms; one of the double rooms has an ensuite. There is also a modern family bathroom. Outside the rear garden enjoys a private sunny with a patio area. To the front aspect of the property, a long shingled driveway to the front of the property provides ample off-road parking.

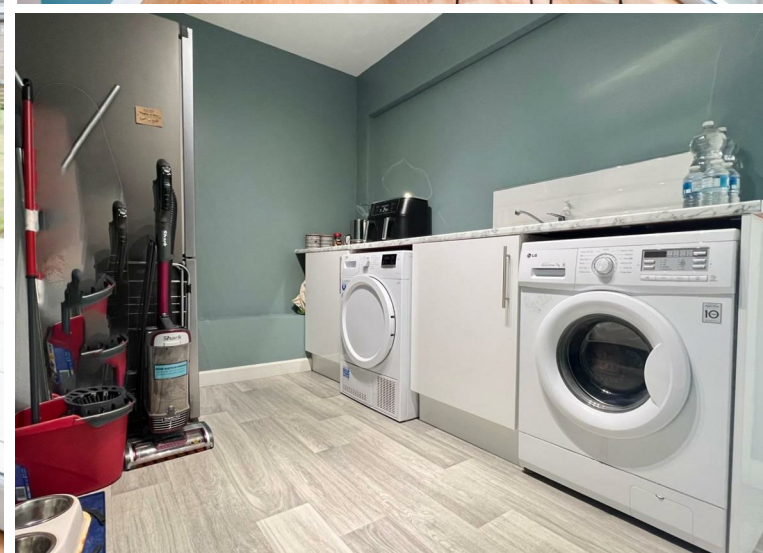
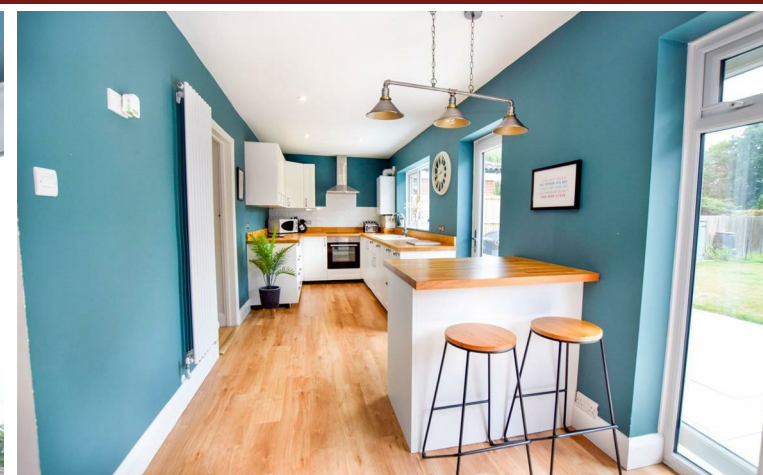
4

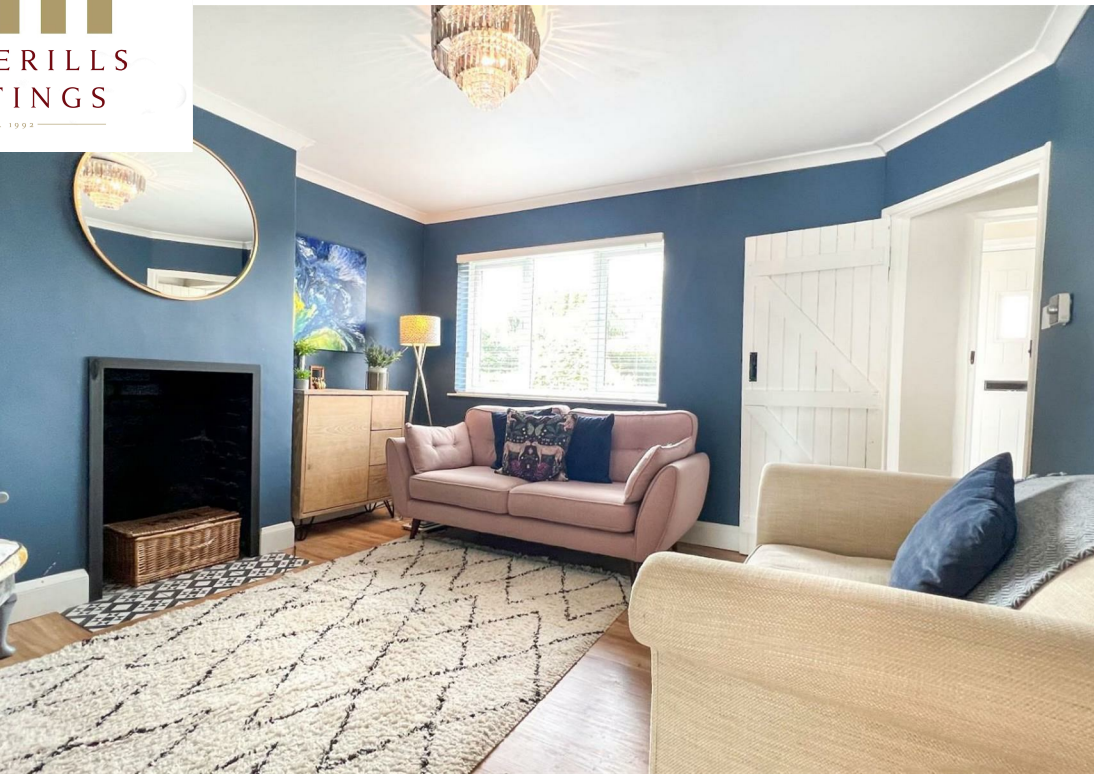


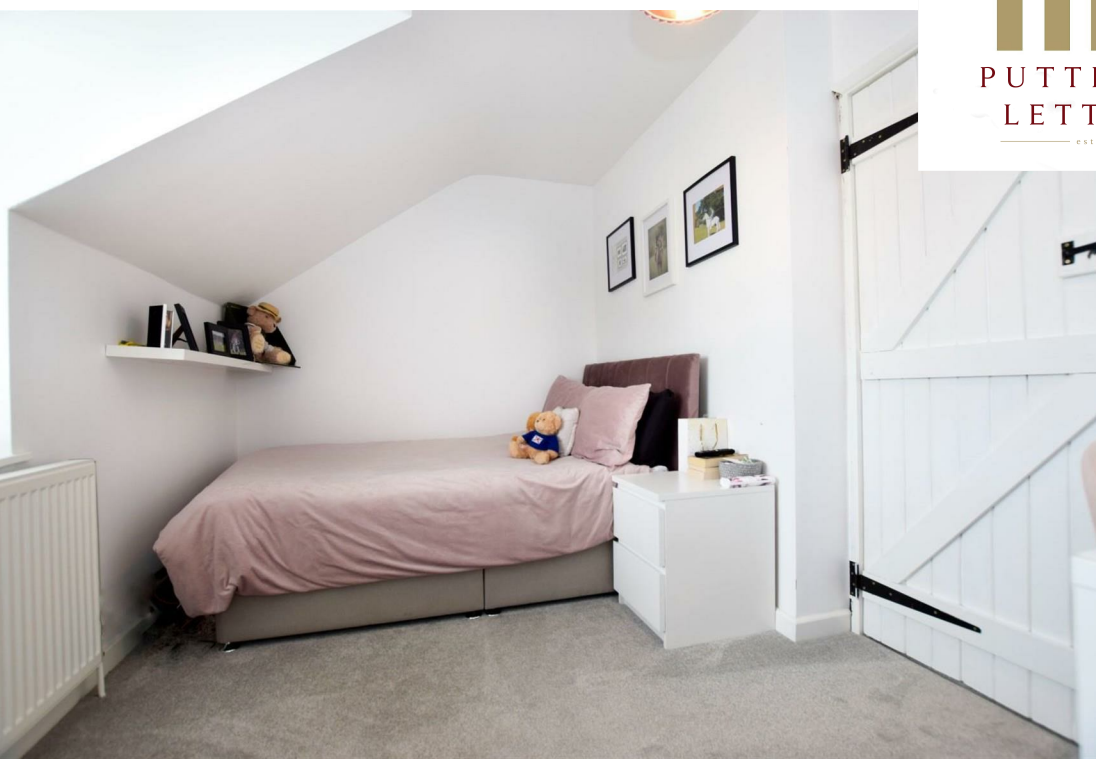
2



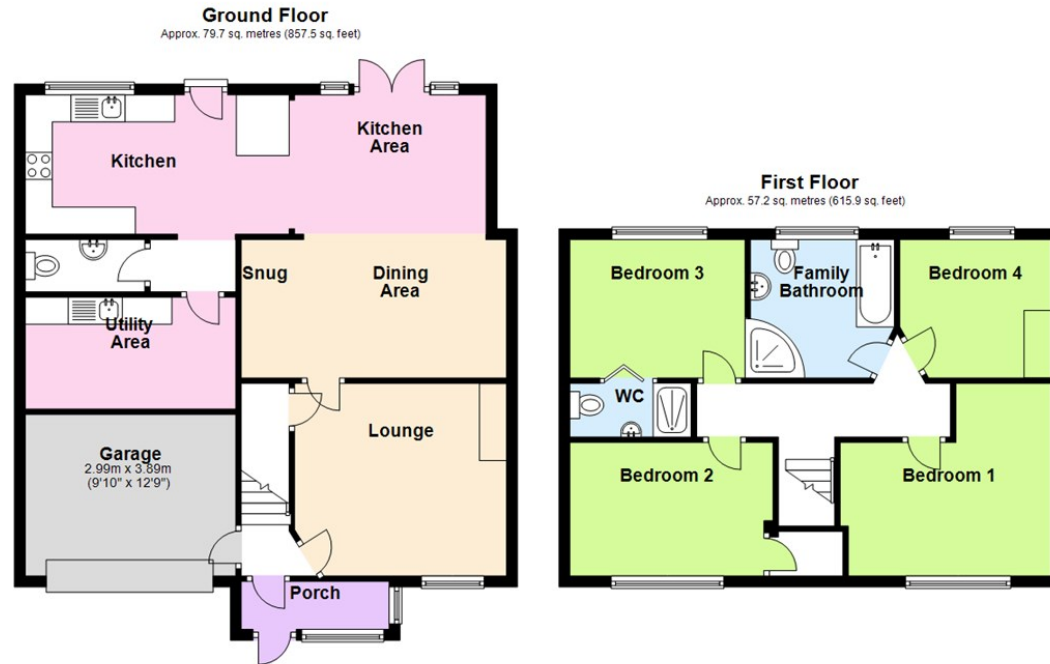
2











LOCAL AUTHORITY

Stevenage

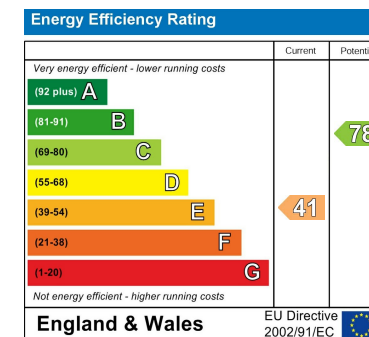
TENURE

COUNCIL TAX BAND

E

VIEWINGS

By prior appointment only



Agents Note: Whilst every care has been taken to prepare these particulars, they are for guidance purposes only. All measurements are approximate and are for general guidance purposes only and whilst every care has been taken to ensure their accuracy, they should not be relied upon and potential buyers/tenants are advised to recheck the measurements



OFFICE ADDRESS

Putterills Lettings
123 London Road
Knebworth
SG3 6EX

OFFICE DETAILS

01462 419333
lettings@putterills.co.uk
www.putterills.co.uk